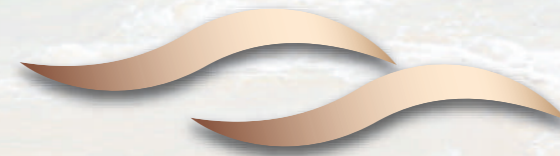




VIBE RESIDENCE

KARON

"Experience resort-style luxury, steps from the beach, in the vibrant heart of Karon."



VIBE RESIDENCE

KARON

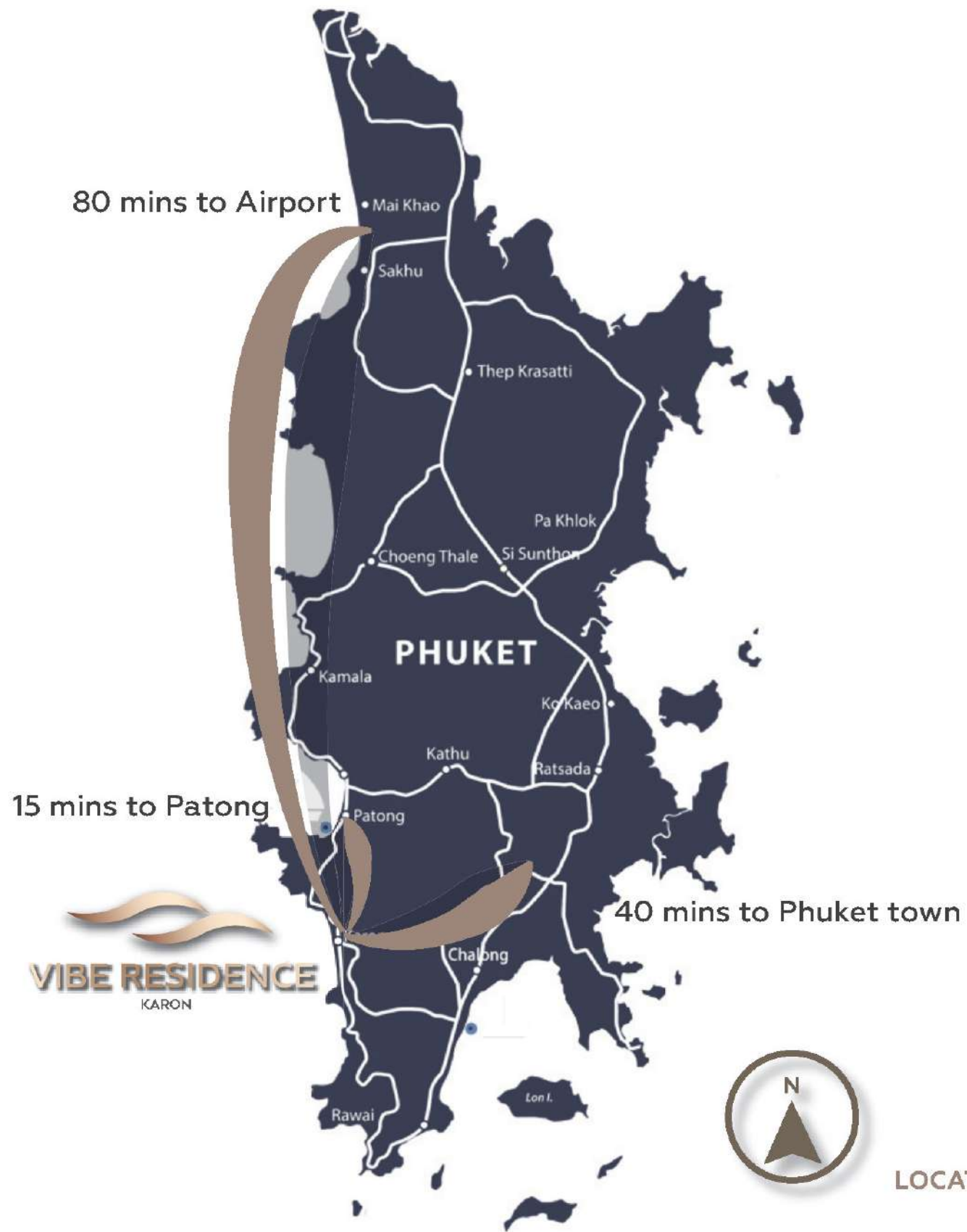
"Experience resort-style luxury, steps from the beach, in the vibrant heart of Karon."

The images, renderings, and layouts shown are computer-generated representations provided for illustrative purposes only. The developer reserves the right to make reasonable adjustments or modifications to the design, materials, and specifications as necessary, without prior notice, to ensure the continued improvement and quality of the Project.









PROMINENT NATURAL LANDMARK

KARON PUBLIC PARK	0.0 Km.
KARON BEACH	0.1 Km.
KATA BEACH	3.3 Km.
PATONG BEACH	5.1 Km.
KARON VIEW POINT	6.0 Km.
PROMTHER CAPE	9.8 Km.

PREMIUM LIFT STYLE AND SERVICE

KARON NIGHT MARKET	0.4 Km.
JUNGCEYLON SHOPPING CENTER	4.7 Km.
BANGLA ROAD	4.7 Km.
CENTRAL PATONG	4.7 Km.
MY FRONT YARD	6.0 Km.
CENTRAL FLORESTA PHUKET	9.0 Km.
PHUKET OLD TOWN & NIGHT MARKET	11.0 Km.

ESSENTIAL FACILITIES

PATONG HOSPITAL	5.1 Km.
RUAMRUDEE INTERNATIONAL SCHOOL PHUKET	7.9 Km.
HEADSTART INTERNATIONAL SCHOOL PHUKET	8.2 Km.
KAJONKIET INTERNATIONAL SCHOOL	9.7 Km.
BANGKOK HOSPITAL	10.5 Km.
PHUKET INTERNATIONAL AIRPORT	28 Km.



KARON BEACH



PHUKET OLD TOWN



KAJONKIET INTERNATIONAL SCHOOL



JUNGCEYLON SHOPPING CENTER



PATONG BEACH



CENTRAL FLORESTA PHUKET



HEADSTART INTERNATIONAL SCHOOL



PROMTHER CAPE



BANGKOK HOSPITAL

NEARBY PLACES

PROJECT OVERVIEW

BUILDING INFORMATION

LAND AREA : 3-2-73.4 Sq.wa
(5893.6 Sq.m.)

BUILD-UP AREA : 28700 Sq.m.

TOTAL BUILDING : 3 BUILDINGS
1 of 5-storey
2 of 8-storey

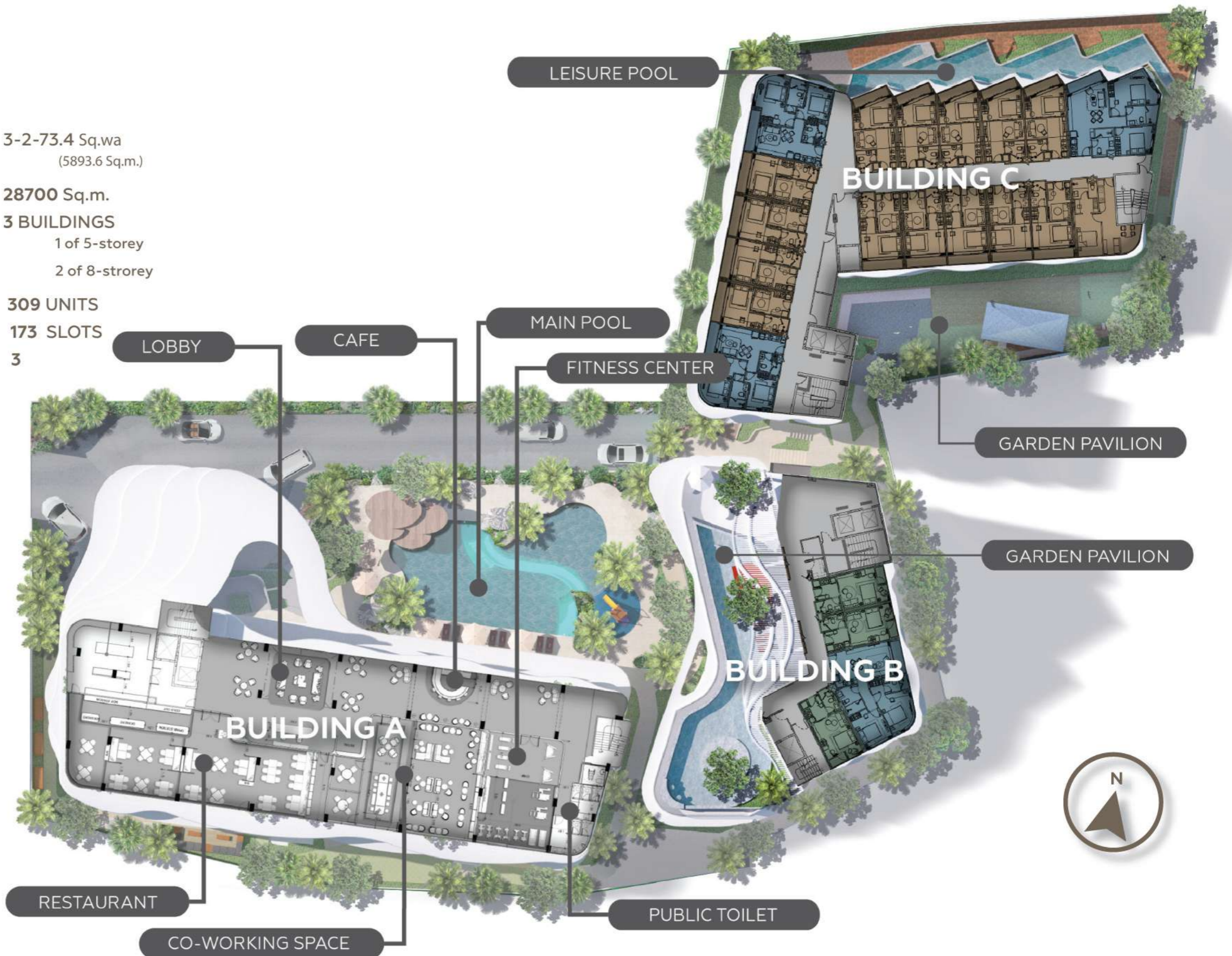
TOTAL UNITS : 309 UNITS

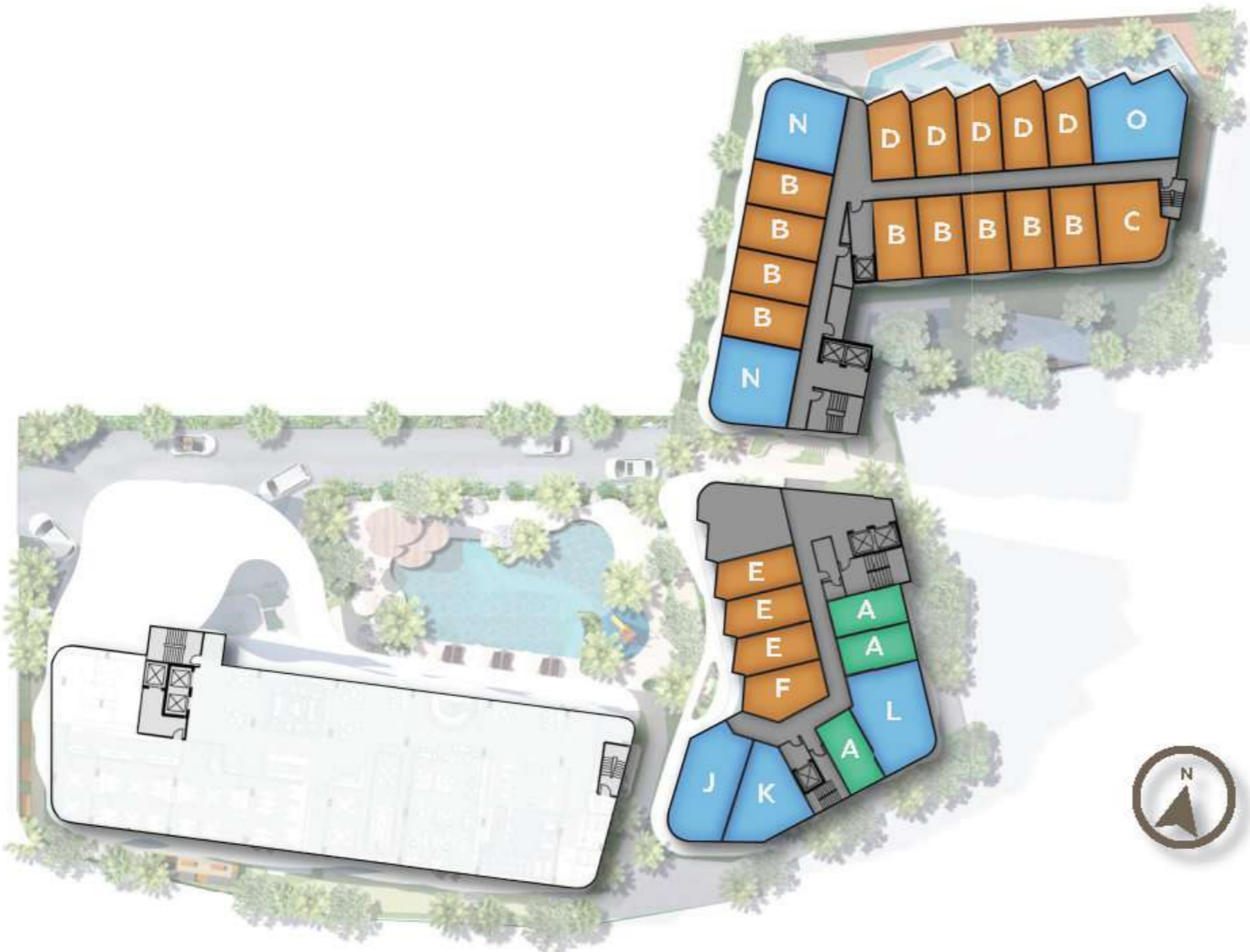
CAR & MOTORCYCLE PARKING : 173 SLOTS

NUMBER OF SWIMMING POOL : 3

FACILITIES

CO-WORKING SPACE
RESTAURANT
FITNESS CENTER
LOBBY AND CAFE
MAIN POOL
SKY POOL
LEISURE POOL
ROOFTOP GARDEN
GARDEN PAVILION





1ST FLOOR



2ND FLOOR

TYPE ROOM PLAN

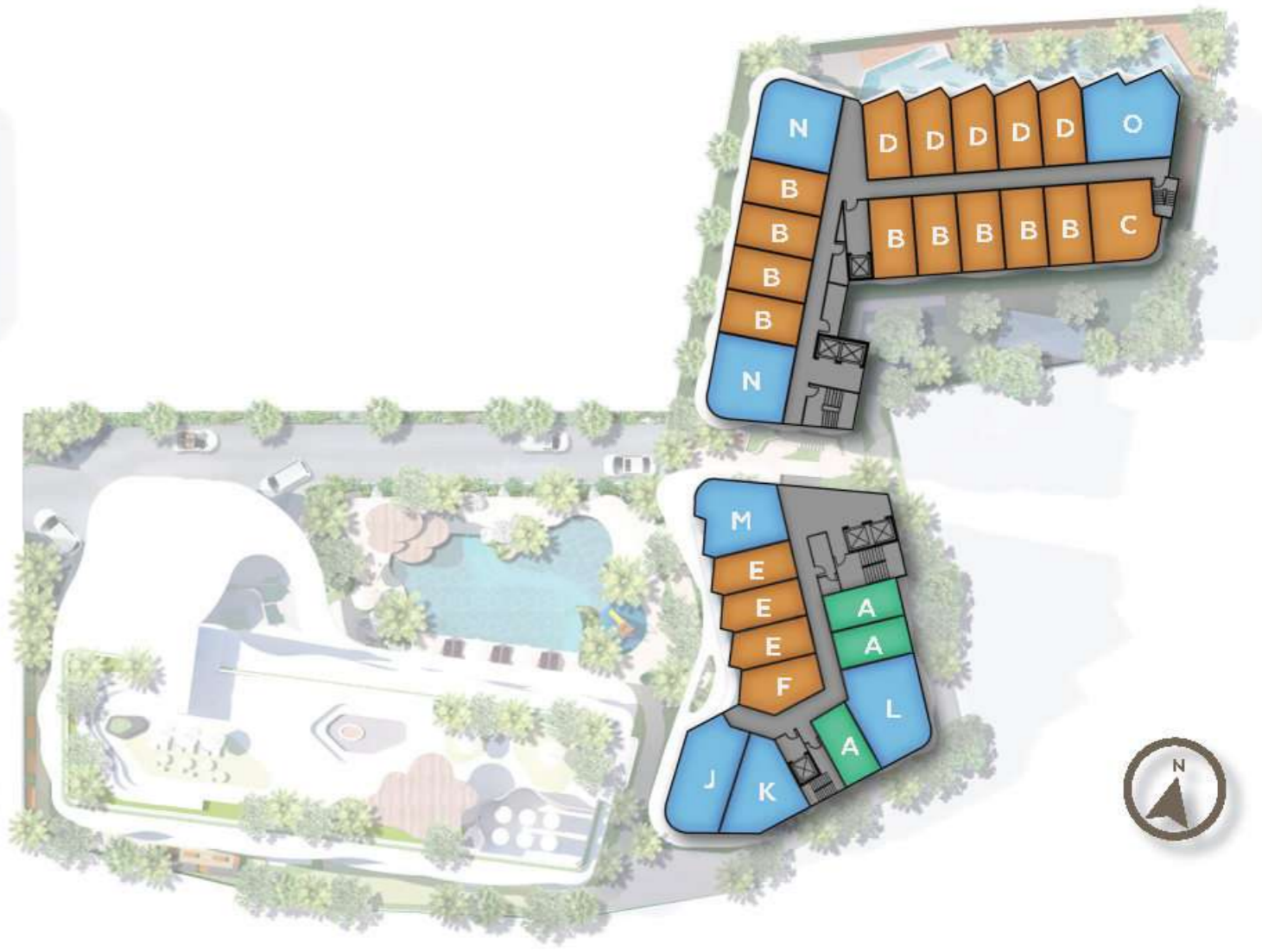
■ STUDIO TYPE
(28 Sq.m.)

■ 1-BEDROOM TYPE
(30 Sq.m.-50 Sq.m.)

■ 2-BEDROOM TYPE
(54 Sq.m.-72 Sq.m.)



3RD-5TH FLOOR



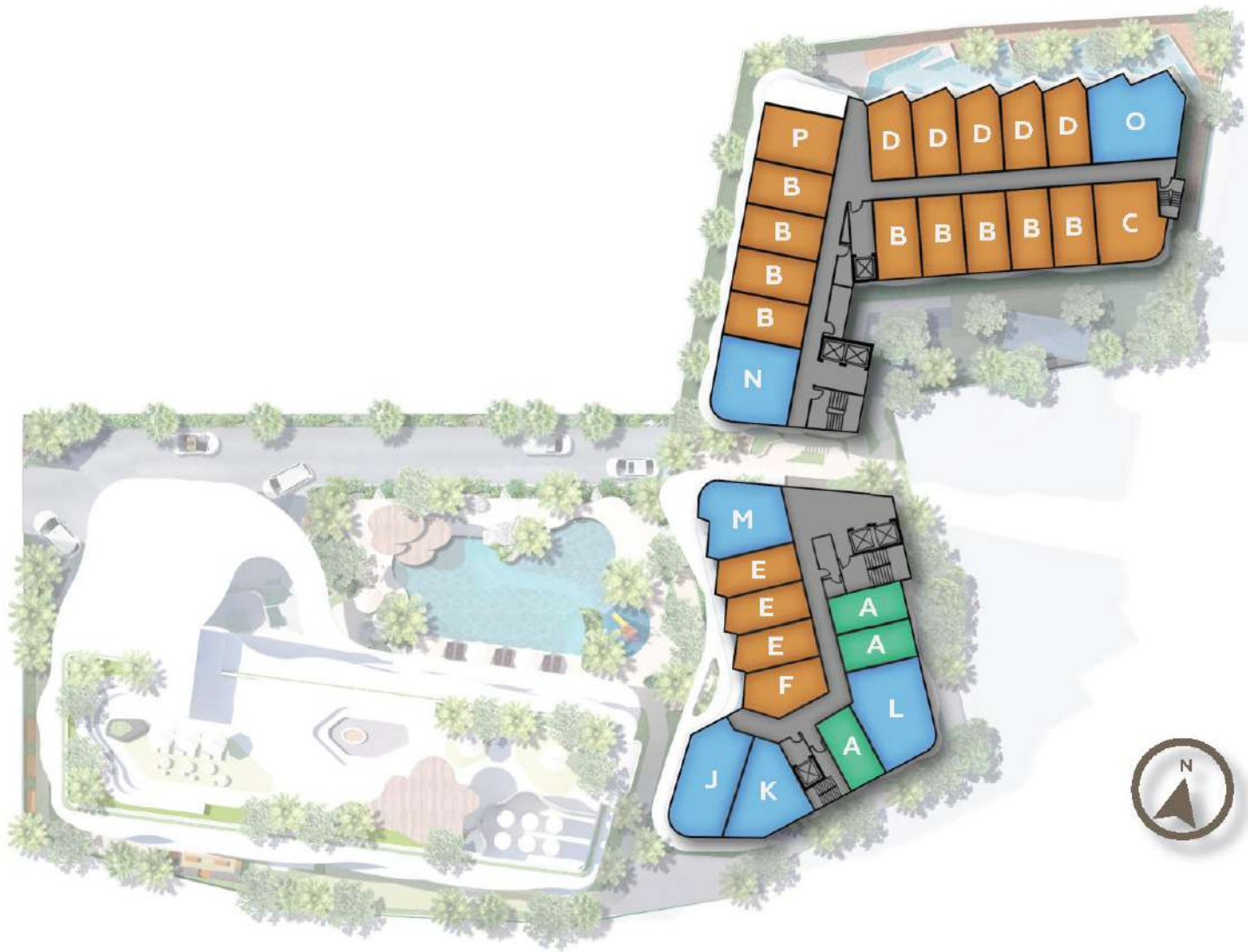
6TH FLOOR

TYPE ROOM PLAN

STUDIO TYPE
(28 Sq.m.)

1-BEDROOM TYPE
(30 Sq.m.-50 Sq.m.)

2-BEDROOM TYPE
(54 Sq.m.-72 Sq.m.)



7TH FLOOR



8TH FLOOR

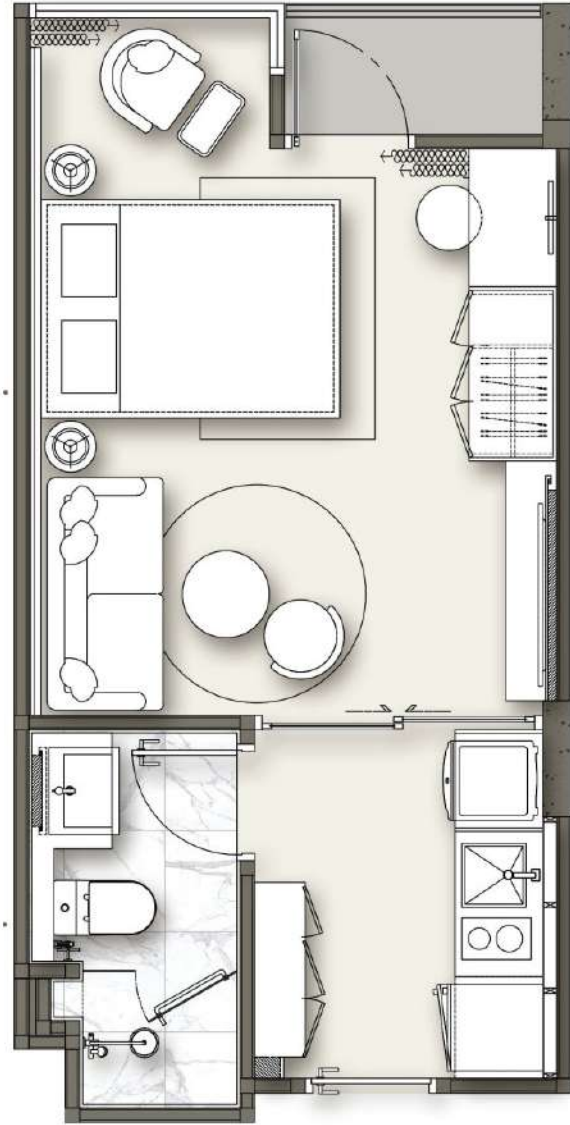
TYPE ROOM PLAN

■ STUDIO TYPE
(28 Sq.m.)

■ 1-BEDROOM TYPE
(30 Sq.m.-50 Sq.m.)

■ 2-BEDROOM TYPE
(54 Sq.m.-72 Sq.m.)

STUDIO TYPE



TYPE A

28 Sq.m.

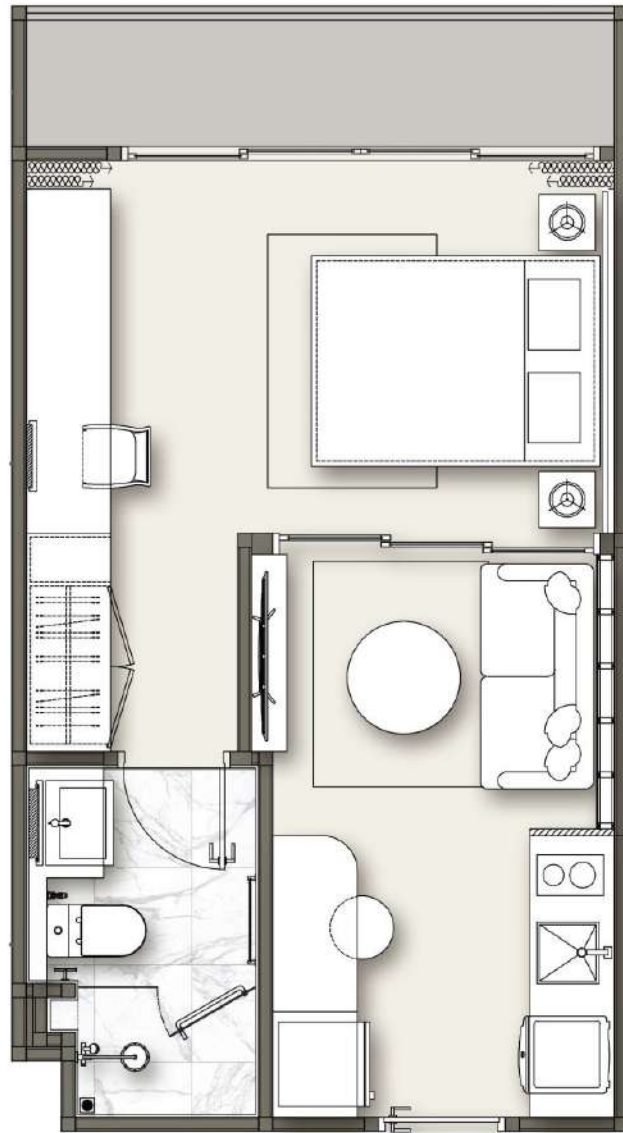
1 Bed

1 Bathroom





1-BEDROOM TYPE

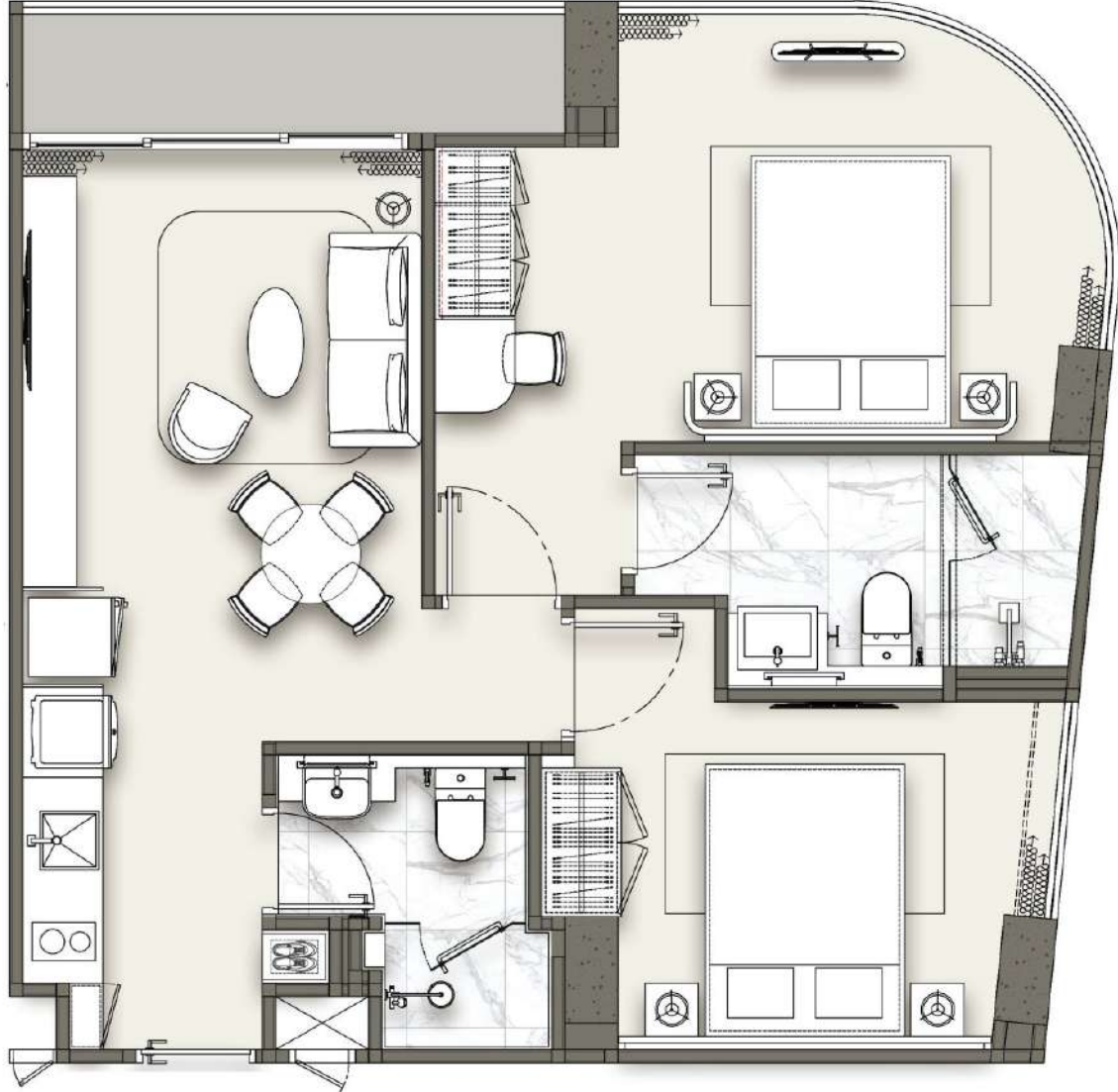


TYPE B  34 Sq.m.  1 Bed  1 Bathroom





2-BEDROOM TYPE



TYPE N



62 Sq.m.



2 Beds



2 Bathrooms







LOBBY











LEISURE POOL



SKY POOL





MAIN POOL



MAIN POOL



ROOFTOP GARDEN



GARDEN PAVILLION

ESM Company Group – Corporate Biography

Founded in 2016 and headquartered in Patong, Phuket, ESM Company Group is a dynamic and diversified business group operating across real estate development, construction, and hospitality management in Thailand. The group comprises three specialized subsidiaries – ESM Development Co., Ltd., ESM Construction Co., Ltd., and ESM Hospitality Co., Ltd. – delivering fully integrated solutions across the entire property value chain.



ESM Development Co., Ltd.

Focusing on the design and development of high-value hotel and residential real estate, ESM Development has established a strong presence in Phuket’s Karon and Patong beaches.

Projects Delivered

The Lake Karon: a master-planned hospitality development on a large land parcel, comprising three branded hotels – JonoX Karon Phuket, Glow Mira Karon, and Phoenix Hotel Karon Beach, located next to Karon public lake.

Front Beach Karon: a twin-hotel beachfront development featuring Karon Beach Hotel and Front Beach Hotel, located on the Karon beach road.

Grace Patong Hotel: a standalone property in central Patong, designed by ESM Development, constructed by ESM construction, and now managed by ESM Hospitality on behalf of its new owner.

Collectively, these delivered projects represent over 1,000 keys and a combined project value exceeding THB 2.5 billion.

ESM Construction Co., Ltd.

Providing comprehensive construction services, ESM Construction covers all phases of building – from structural and architectural works to MEP systems and interior finishing. The company executes both in-house developments and external client projects.

Notable Completed Projects

- The Crest Patong
- Four Points by Sheraton Bangkok Sukhumvit 22
- Fantasea Condo Kamala

Projects Under Construction

- Capri Residence Bangtao
- Wyndham Chalong
- Sea Heaven Condominium Phase 3.1

With external contracts valued at THB 2 billion, ESM construction has become a trusted partner for developers seeking reliable and high-quality construction across Phuket.



ESM Hospitality Co., Ltd.

Specializing in hotel management, ESM Hospitality provides end-to-end operational solutions, enhancing guest experiences while optimizing performance for both group-owned and third-party assets.

Currently Managed Hotels

- Grace Patong Hotel
- Phoenix Hotel Karon

Both developed by ESM development, and entrusted to ESM hospitality by their new owners.

Conclusion

With its integrated capabilities spanning development, construction, and hospitality management, ESM Company Group has established itself as a forward-thinking and trusted leader in Phuket's real estate and hospitality sectors. The group continues to pursue new opportunities to expand its portfolio and reinforce its market presence in high-demand destinations.

